



BETTER TRANSPORT • BETTER PLACES • BETTER CHOICES

Inclusion in transport: the influence of disability and income

ITE-ANZ Webinar, September 2020

Bridget Burdett

bburdett@mrcagney.com

Today

1. What is 'inclusive access'?
2. Disability statistics
3. Income statistics
4. Implications for transport policy and practice

Today

1. What is 'inclusive access'?
2. Disability statistics
3. Income statistics
4. Implications for transport policy and practice

What is inclusive access?

Accessibility = the ability to participate

Inclusive access = the ability *of everyone* to participate





What affects participation?

Mental state

Feeling sick

Feeling tired

Anxiety

Mood

What affects participation?

Capacity

Microsoft Inclusive Design Toolkit

Permanent disability



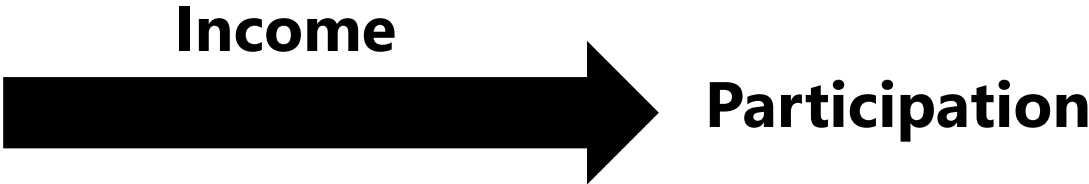
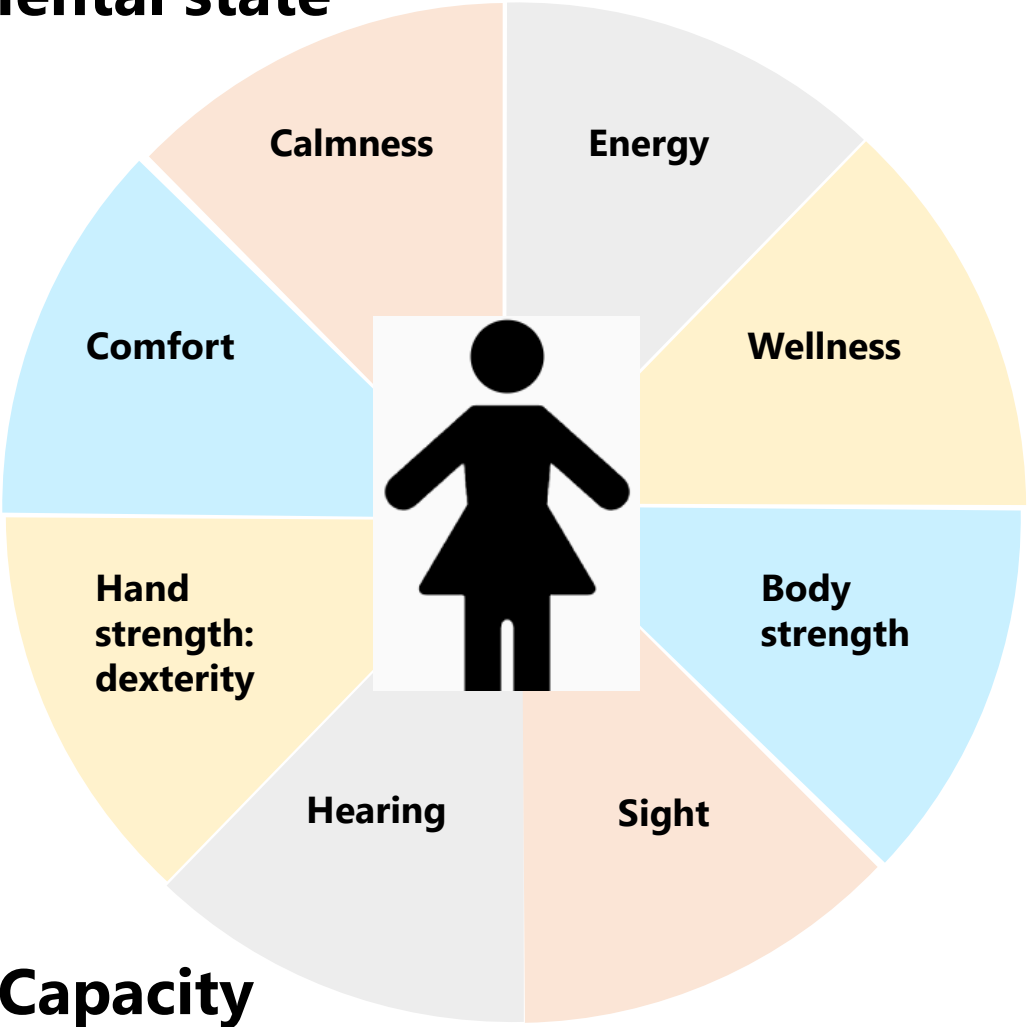
Temporary disability



Situational impairment



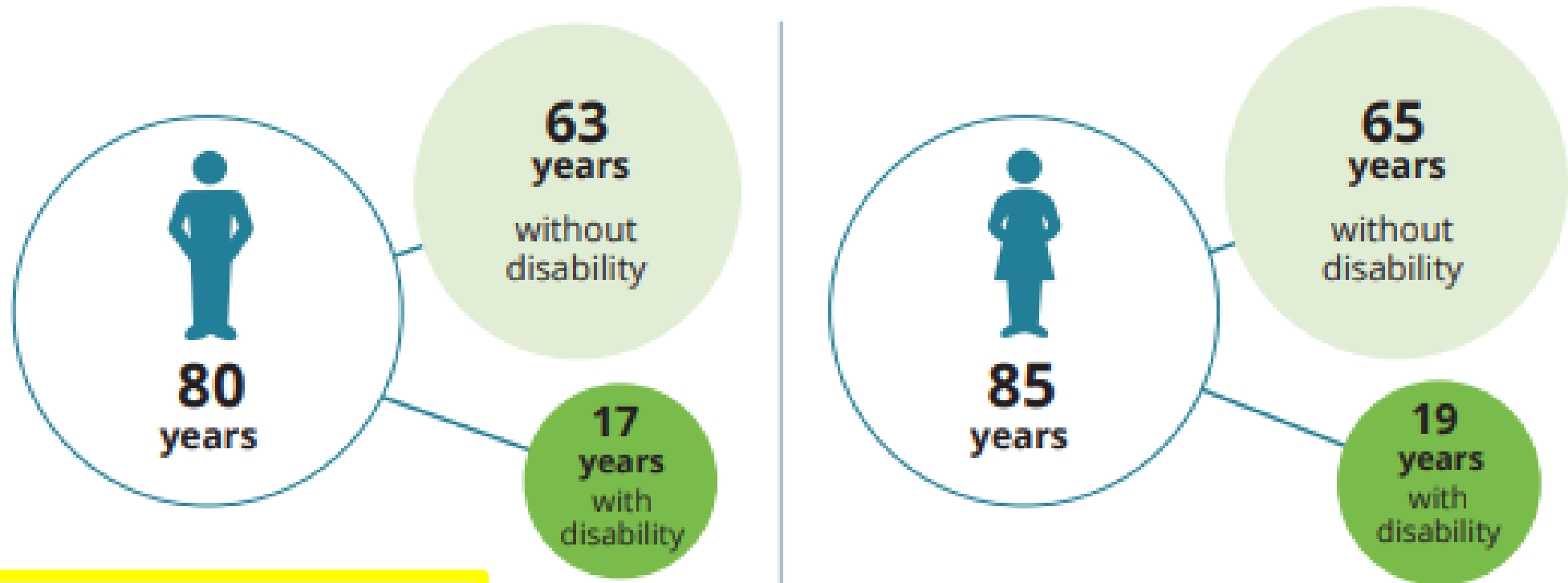
Mental state



Today

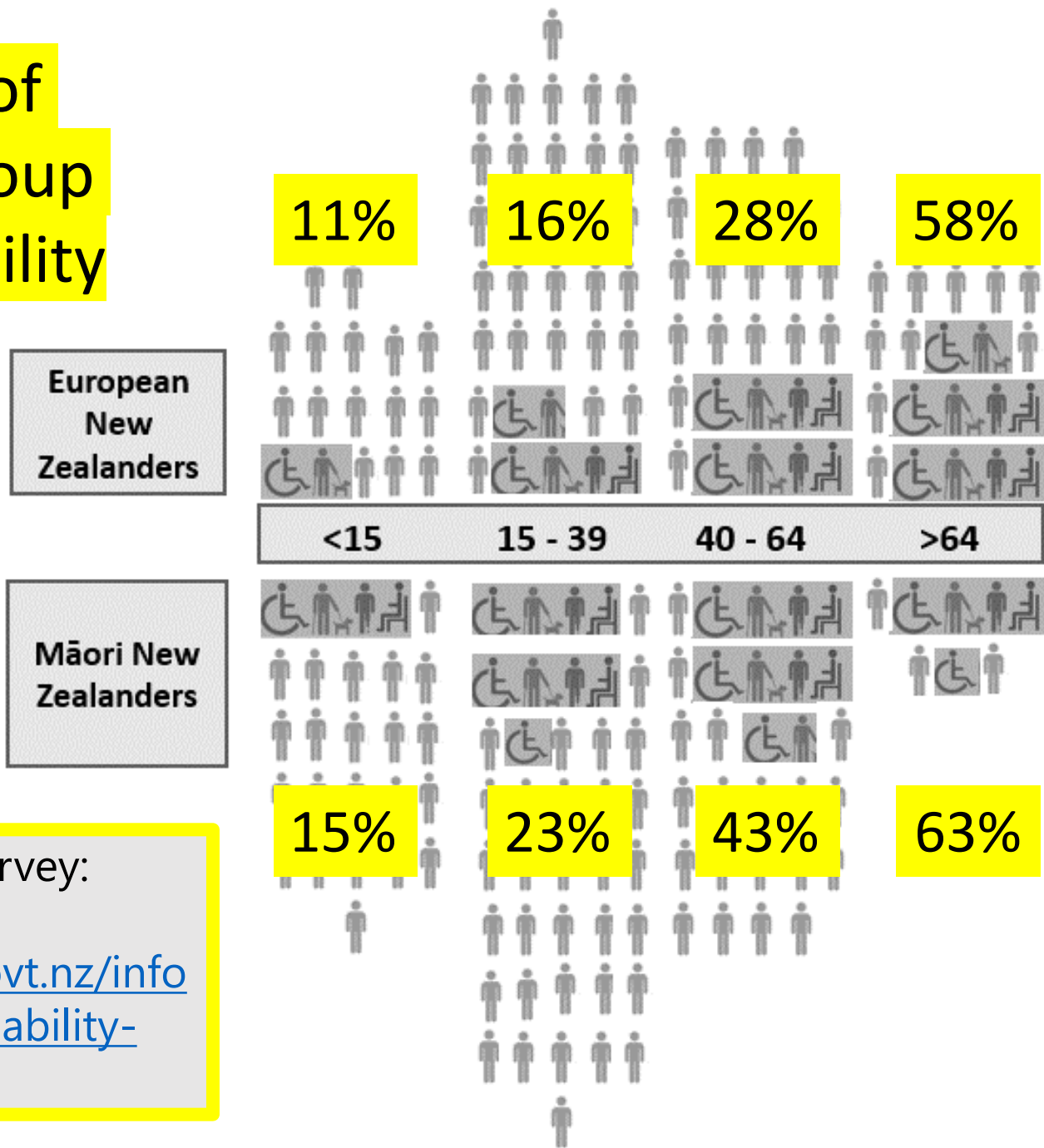
1. What is 'inclusive access'?
2. Disability statistics
3. Income statistics
4. Implications for transport policy and practice

Life expectancy of Australians born in 2015



Source: People with disability in Australia 2019, Australian Government
<https://www.aihw.gov.au/reports-data/health-conditions-disability-deaths/disability/overview>

Proportion of each age group with a disability



Life expectancy, Non-Māori New Zealanders: 84 (male), 80 (female)

Life expectancy, Māori New Zealanders: 77 (female), 73 (male)

Source: Disability Survey: 2013, Statistics NZ
<https://www.stats.govt.nz/information-releases/disability-survey-2013>

Today

1. What is 'inclusive access'?
2. Disability statistics
- 3. Income statistics**
4. Implications for transport policy and practice

Mean weekly earnings,
Male with Bachelors degree:
\$1,617



Mean weekly earnings,
Female with no qualification:
\$774



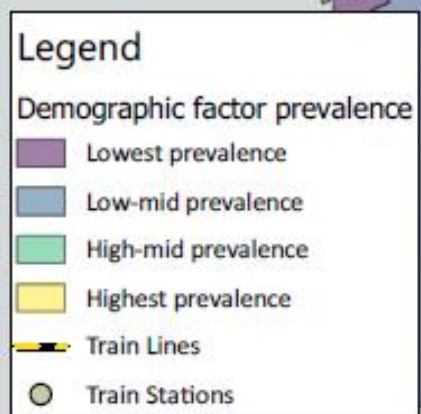
Source:

Earnings from main wage and salary job by industry (ANZSIC 2006), sex, and highest qualification

<http://nzdotstat.stats.govt.nz/wbos/index.aspx>

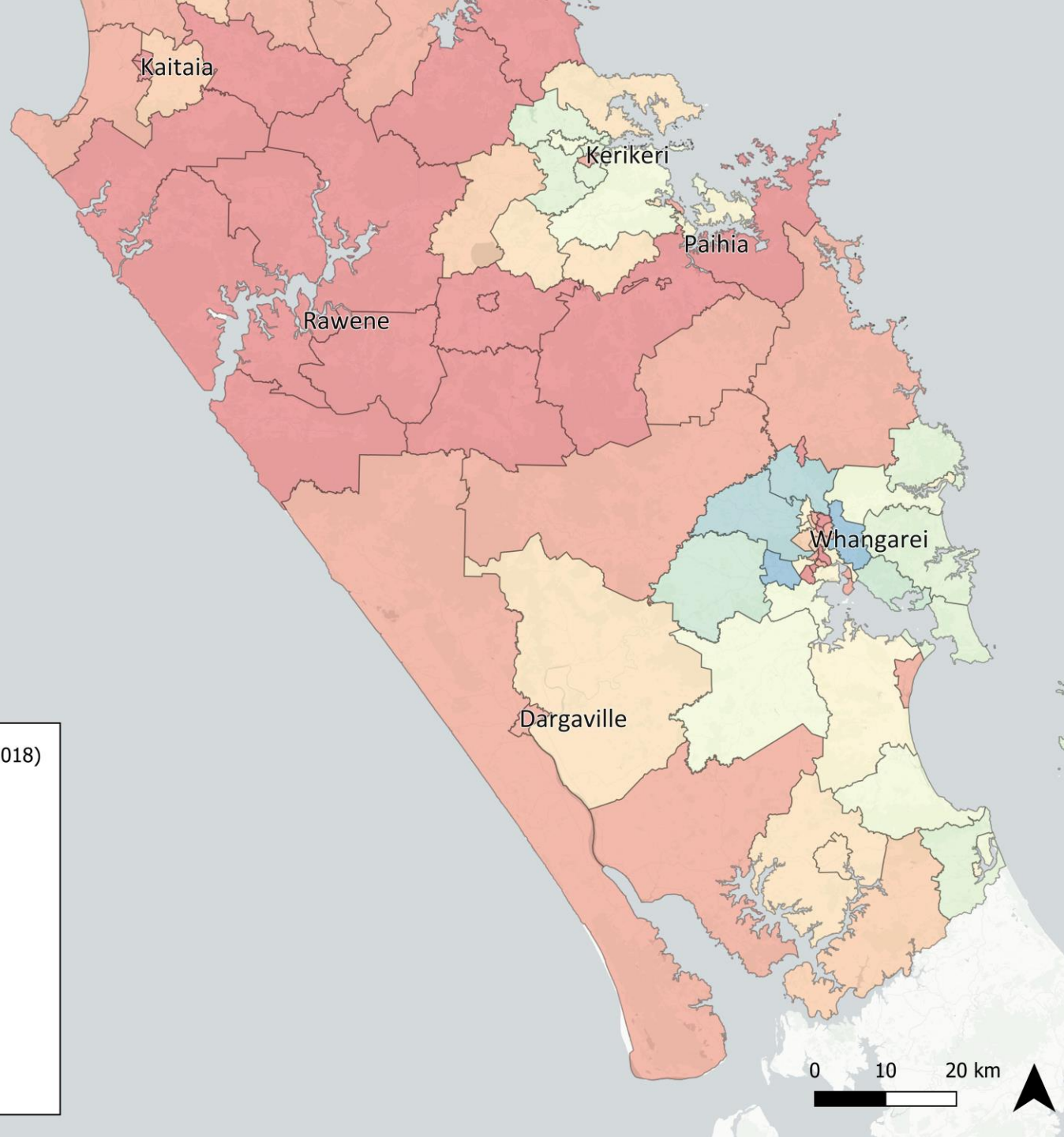
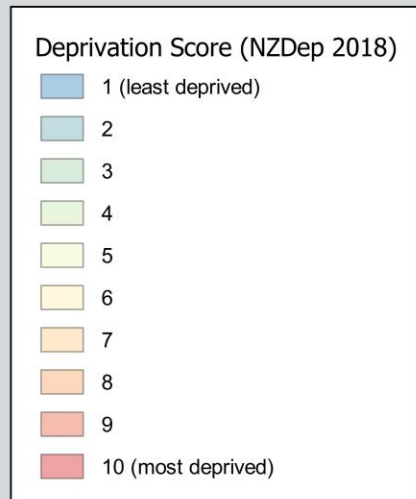
Income and transport: Urban

Income quartiles: Auckland



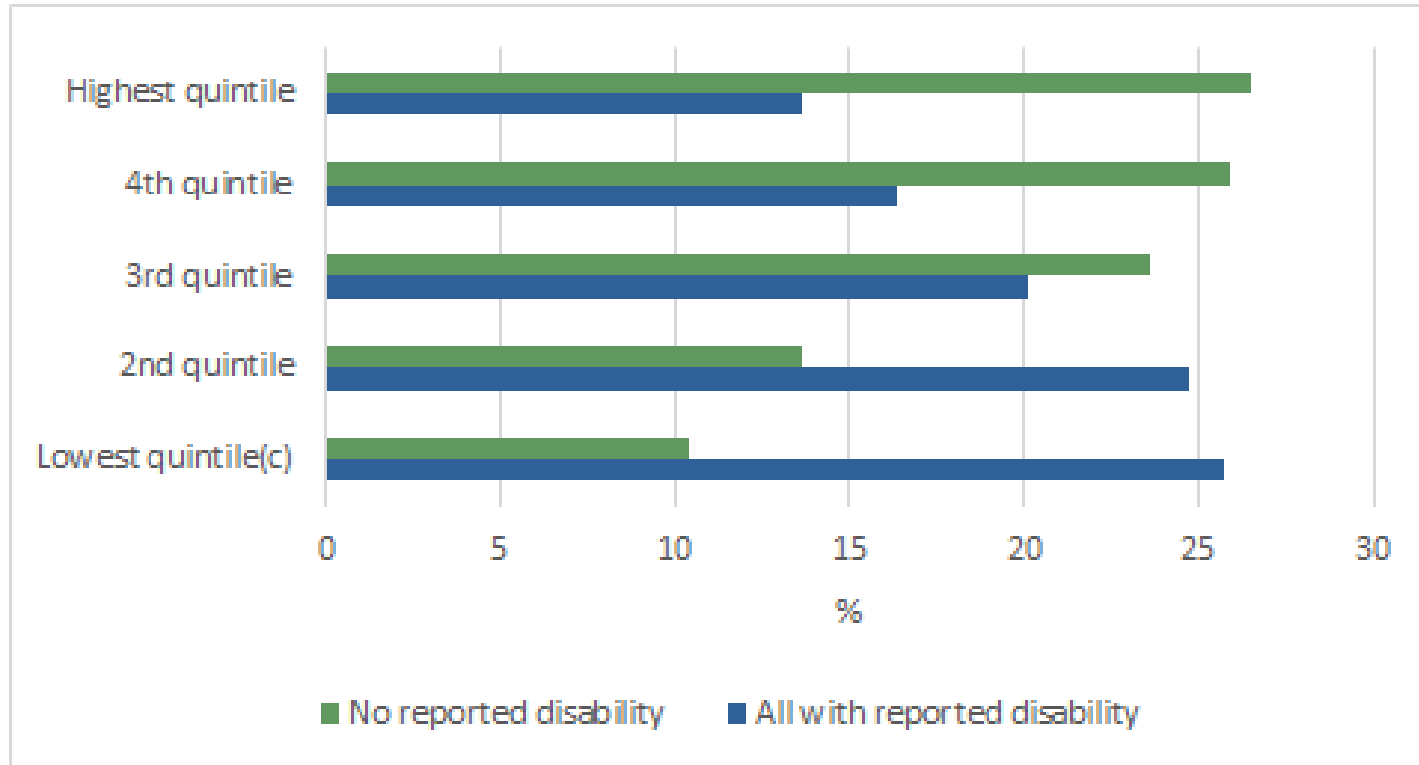
Income and transport: Rural

Index of Social Deprivation: NZDep 2018



Income and disability: Australia

Persons aged 15-64 years(a), equivalised gross household income quintiles(b), by disability status, 2018



Source: Australian Bureau of Statistics, Disability, Ageing and Carers, Australia: Summary of Findings, 2018 <https://www.abs.gov.au/Disability>

Income and disability: New Zealand

Disabled people work fewer hours, for lower wages, and are less likely to have all levels of qualification

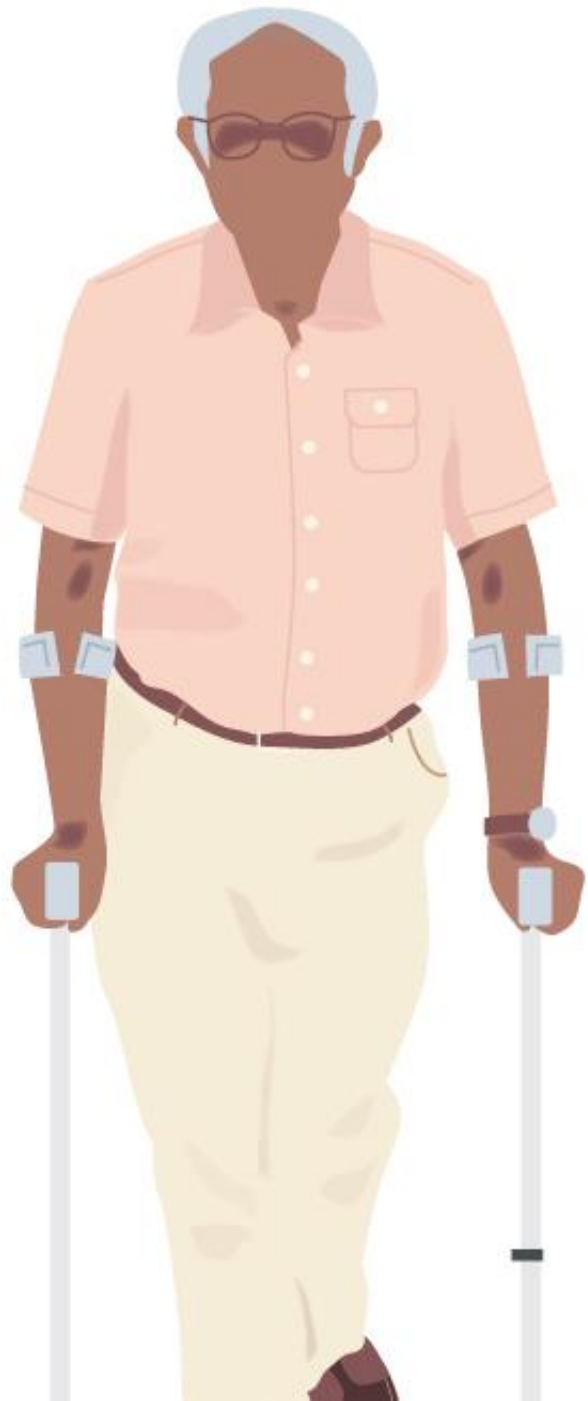
Non-disabled males **75%** employed

Disabled females **21%** employed

Data applies to all people aged 15 years and over. Source: Statistics NZ Labour Market Statistics (disability): June 2018 quarter <https://www.stats.govt.nz/information-releases/labour-market-statistics-disability-june-2018-quarter>

Today

1. What is 'inclusive access'?
2. Disability statistics and implications
3. Income statistics and implications
4. Implications for transport policy and practice



If we don't measure equity in transport, and built environments are dominated by privileged people, inequity will grow.

Why should we have to measure something?

Road safety:

Vision

Policy

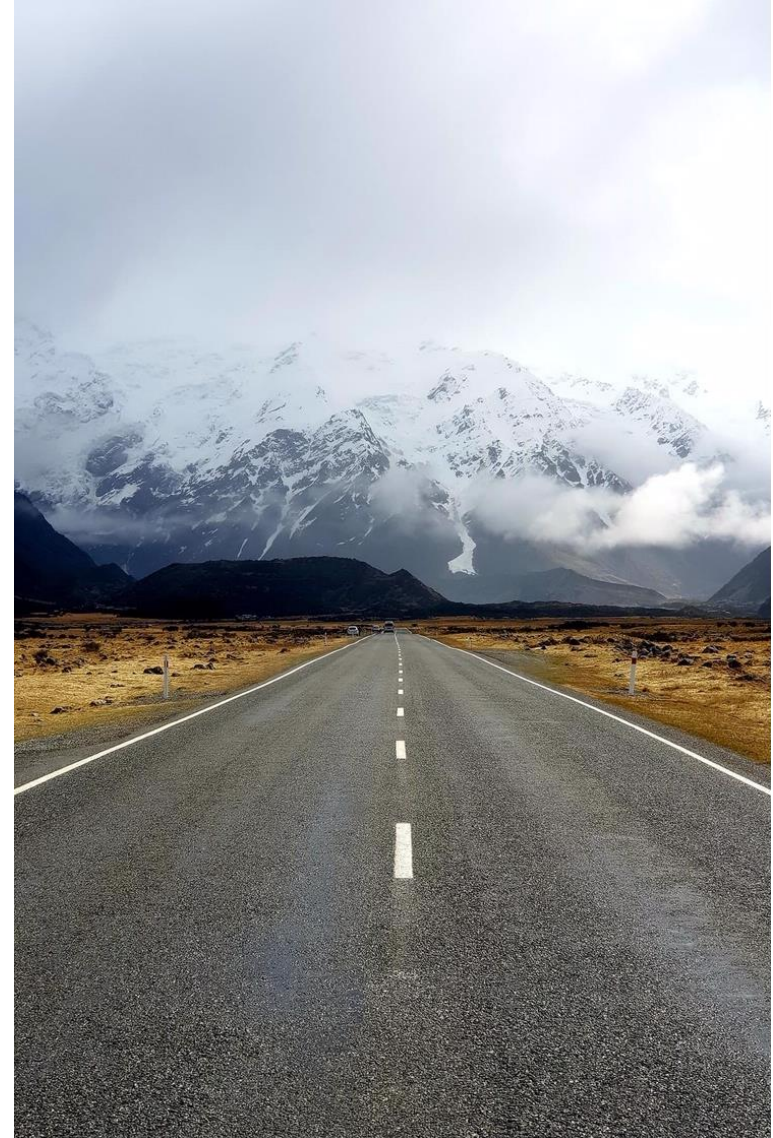
Priorities

Design Standards

Monitoring

Research

Are we reducing crashes?



Why should we have to measure something?

Inclusive access:

Vision

Policy?

Priorities

Design Standards?

Monitoring

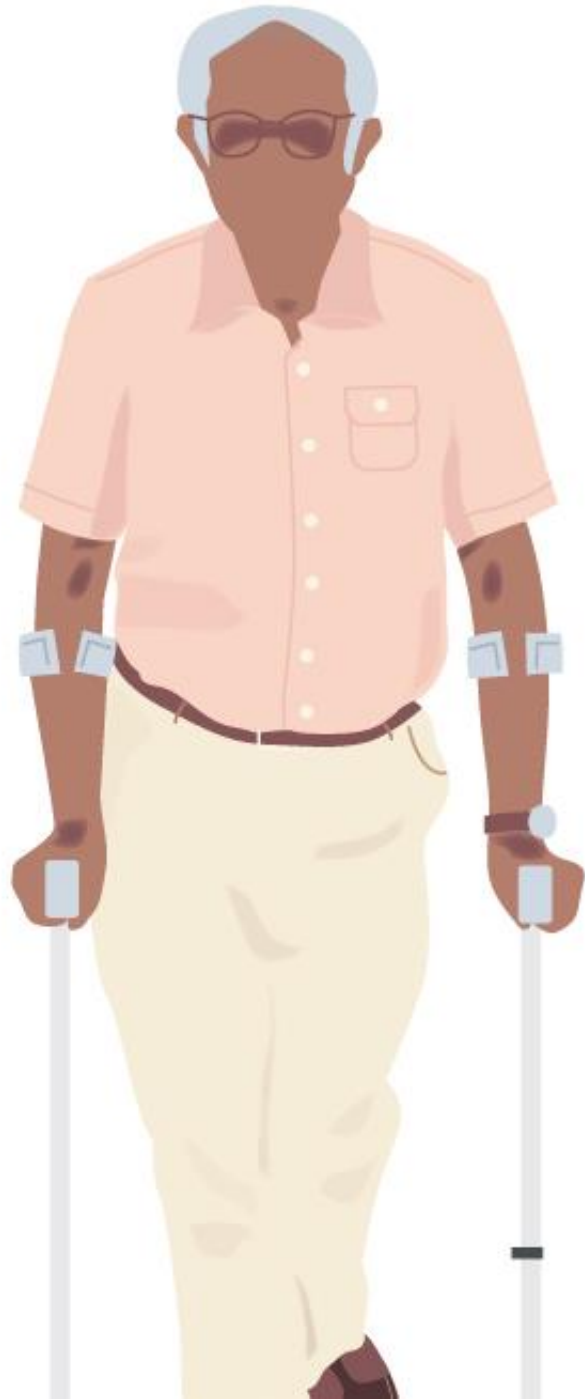
Research?

...What's the question we are answering?



How to do better: Measuring equity in transport

- 1) Talk with people to find out what trips they don't make
- 2) Find out more about the travel costs people face
- 3) Measure diversity of participation by counting people traveling, and at destinations: estimate age, gender, and disability



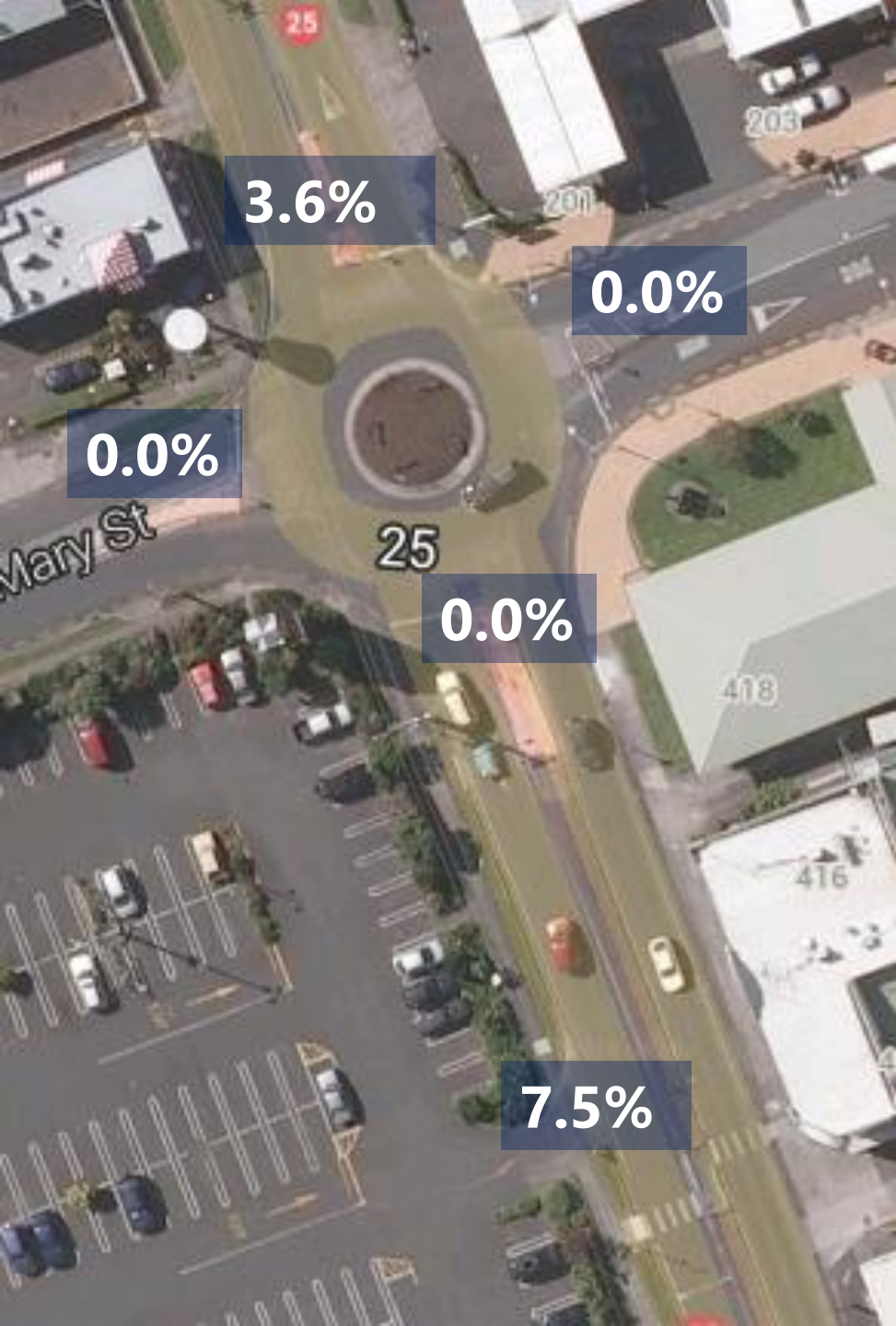
Talk with people about trips not made

- “My brother is cared for in a home and requires a wheelchair to go places. Unless scheduled well in advance, he has no access to a mobility vehicle... ..this affects his social interaction and excludes him from outings”



Talk with people about transport costs

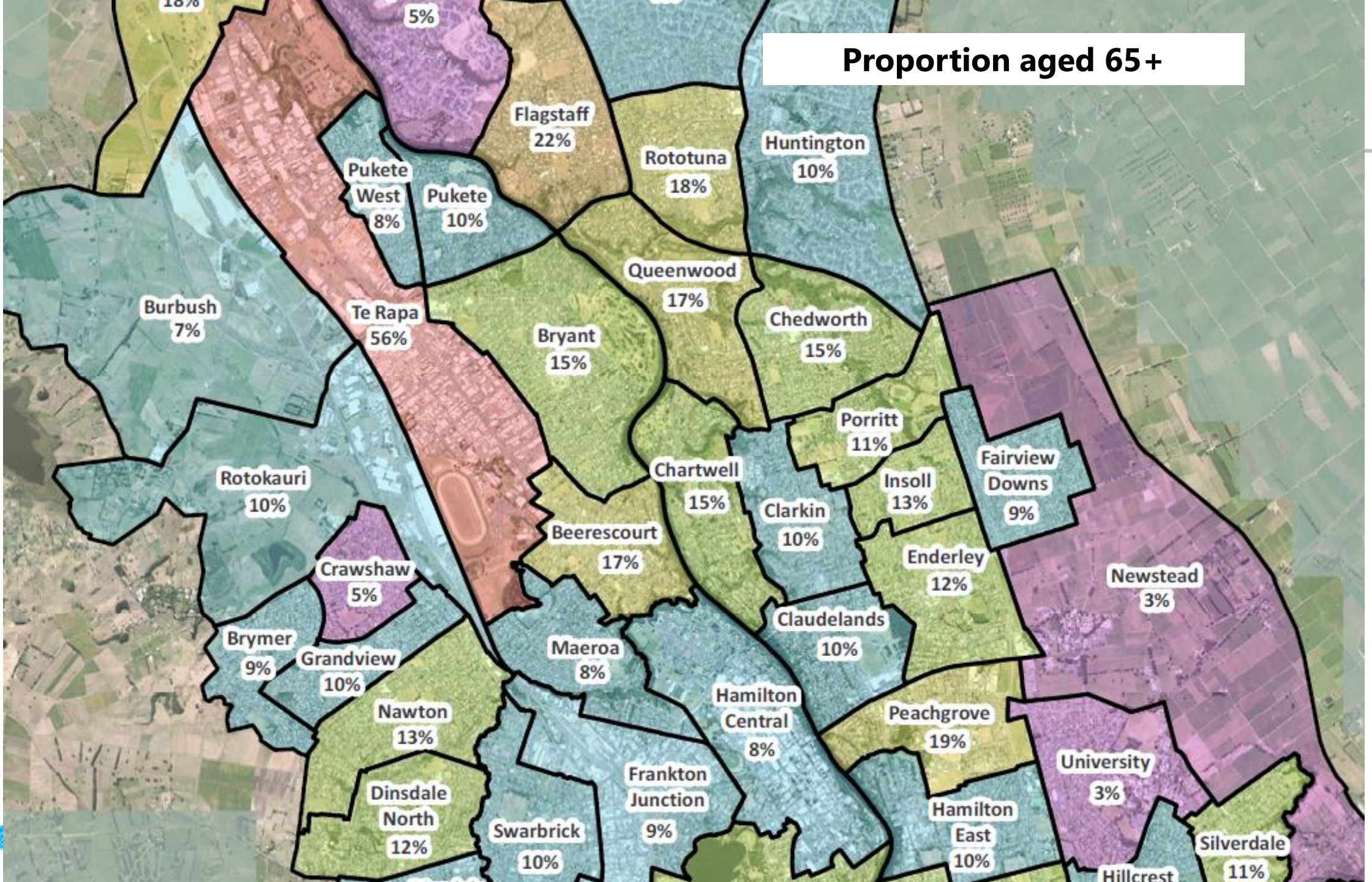
- “We have people who can’t afford a car, they end up getting a loan from a dodgy finance company. They struggle to make the payments, there’s a lot of interest, and then penalty payments. It’s a vicious cycle, just because they need a car.”



Measure diversity of participation

- Example: Mary and Queen Streets, Thames. Count of mobility aid users as proportion of people crossing the road.
- Different accessibility and perceived safety of different crossings results in different use

Proportion aged 65+





BETTER TRANSPORT • BETTER PLACES • BETTER CHOICES

Bridget Burdett

bburdett@mrcagney.com



www.linkedin.com/in/bridgetburdett