

Institute of Transportation Engineers
Annual Breakfast Meeting

Wednesday 4 February 2015

The Hon Luke Donnellan MP
Minister for Roads and Road Safety
Minister for Ports



Measuring congestion

Average delays caused by congestion

Suburb	Distance to CBD	Delay due to congestion
Narre Warren	40 kilometres	32 minutes
Ivanhoe	12 kilometres	10 minutes
Geelong	75 kilometres	60 minutes
Frankston	55 kilometres	44 minutes
Thomastown	17 kilometres	14 minutes
Scoresby	25 kilometres	20 minutes

Actions on congestion

- **Ensure that responsibility for a whole-of-government approach is assigned to a single agency**
- **Greater priority for peak flows during morning and afternoon commute**
- **Establish a Travel Demand Management Unit**

Key commitments on congestion

- **Removing 50 of the most deadly level crossings**
- **Building the West Gate Distributor**
- **Dedicating \$1 billion to suburban roads and \$1 billion to country roads**
- **Establishing the Victorian Transport Building Fund**

Two key delivery agencies

INFRASTRUCTURE VICTORIA

PROJECTS VICTORIA

The role of Infrastructure Victoria

- **Identifying the need for state and nationally significant infrastructure**
- **Evaluating proposals for new infrastructure**
- **Undertaking and publishing research on the benefits of particular projects**
- **Advising on funding models**
- **Coordinating funding submissions to the Commonwealth**

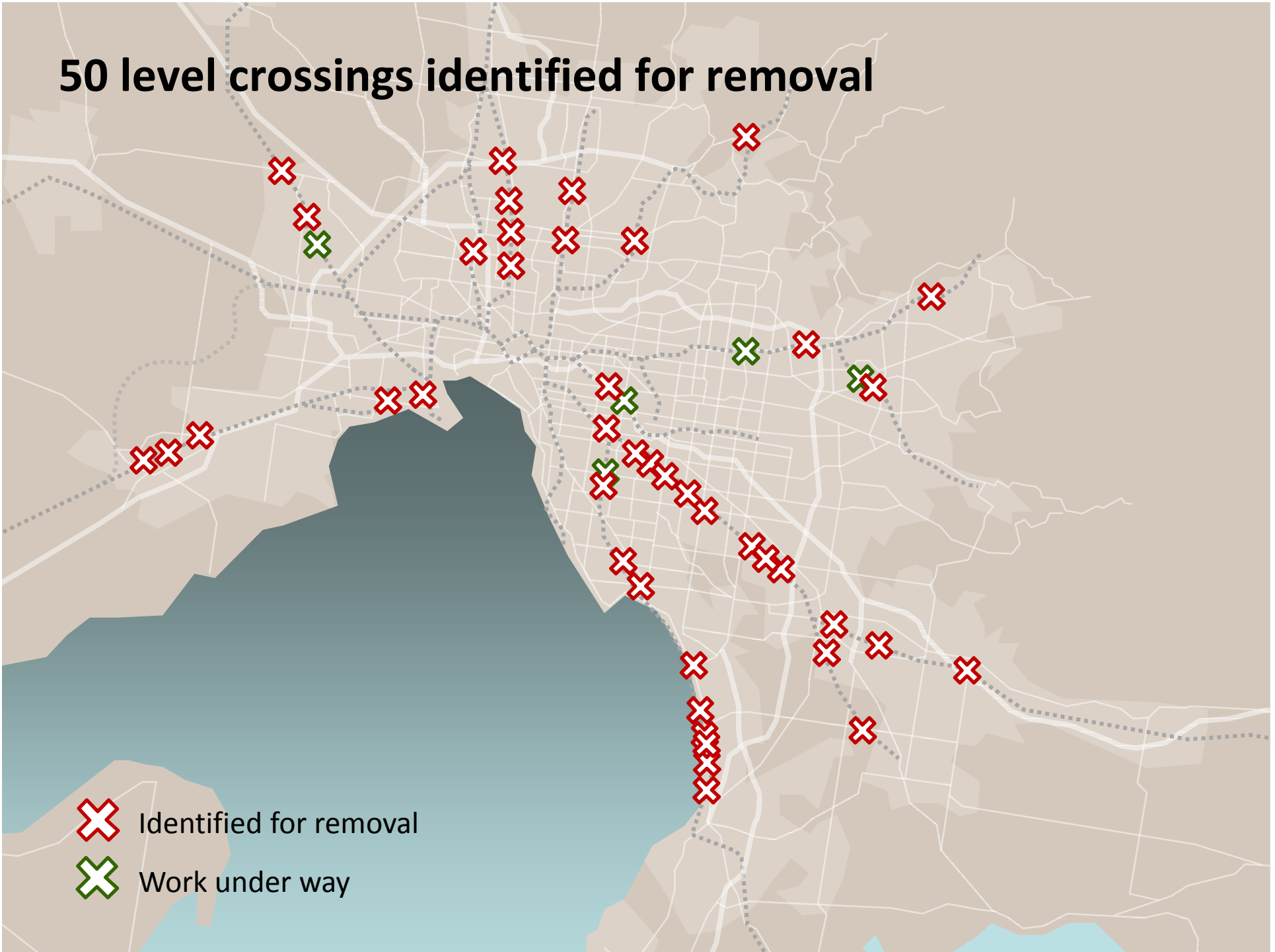
The role of Projects Victoria

- **Overseeing the scope, design and delivery of major projects**
- **Acting as the key project delivery body in the procurement of major infrastructure projects**
- **Developing procurement models**
- **Ensuring the workforce includes mentoring programs, apprenticeships, traineeships and cadetships**

Removing 50 level crossings



50 level crossings identified for removal



Why grade separate?

Crossing closure times

Level crossing	Number of closures 7am-9am	Average closure time	Maximum closure time
Grange Rd	31	1.09 minutes	2.18 minutes
Koornang Rd	36	1.27 minutes	3.06 minutes
Murrumbeena Rd	30	1.27 minutes	3.06 minutes
Poath Rd	38	1.08 minutes	2.13 minutes

Source: ARRB

Why grade separate?

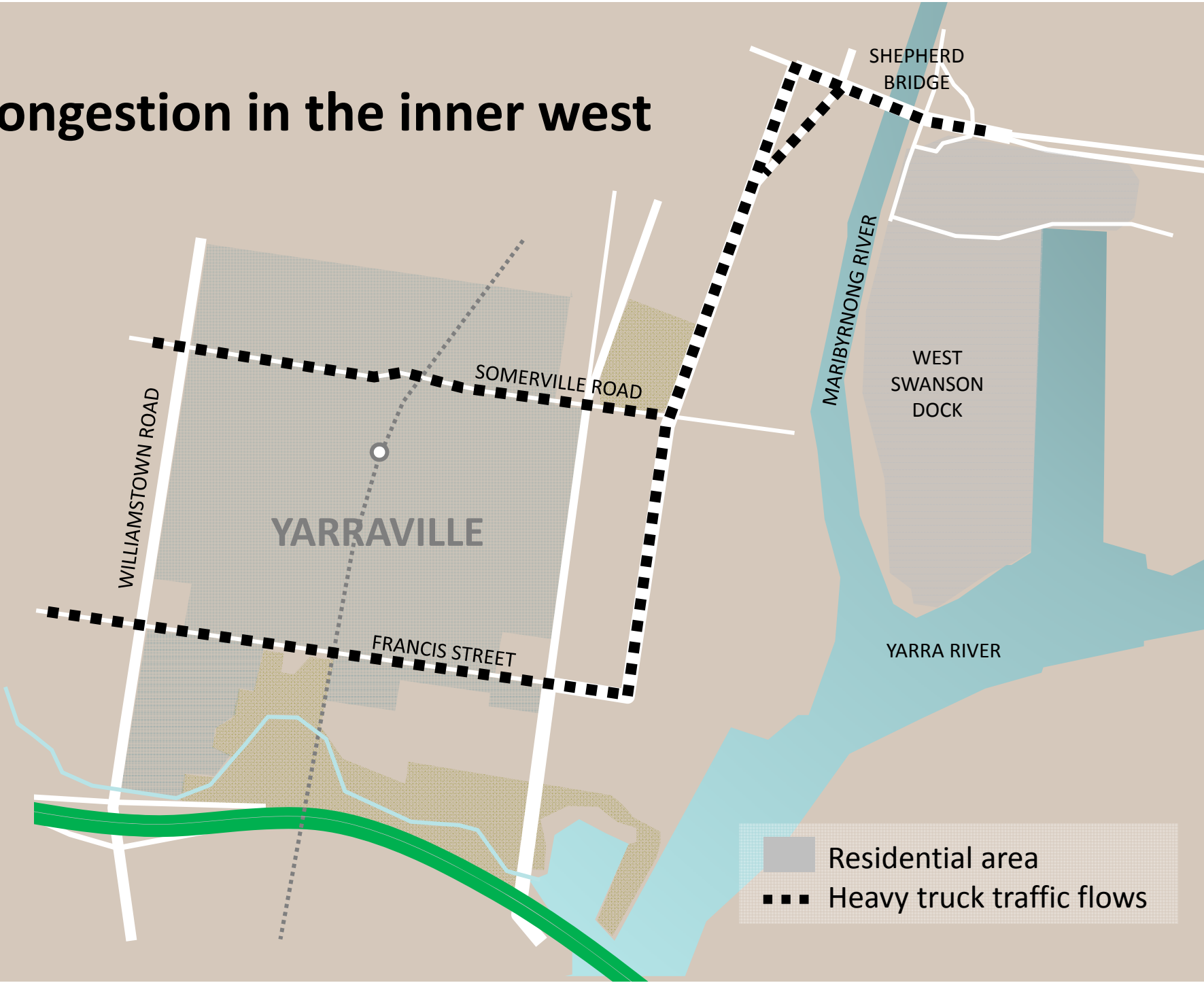
Projected crossing closure times – 2021

Assuming three extra services added 7am-9am

Level crossing	Number of closures 7am-9am	Average closure time	Maximum closure time
Grange Rd	39	1.12 minutes	3.44 minutes
Koornang Rd	35	1.33 minutes	3.30 minutes
Murrumbeena Rd	35	1.32 minutes	3.08 minutes
Poath Rd	39	1.23 minutes	5.54 minutes

Source: ARRB

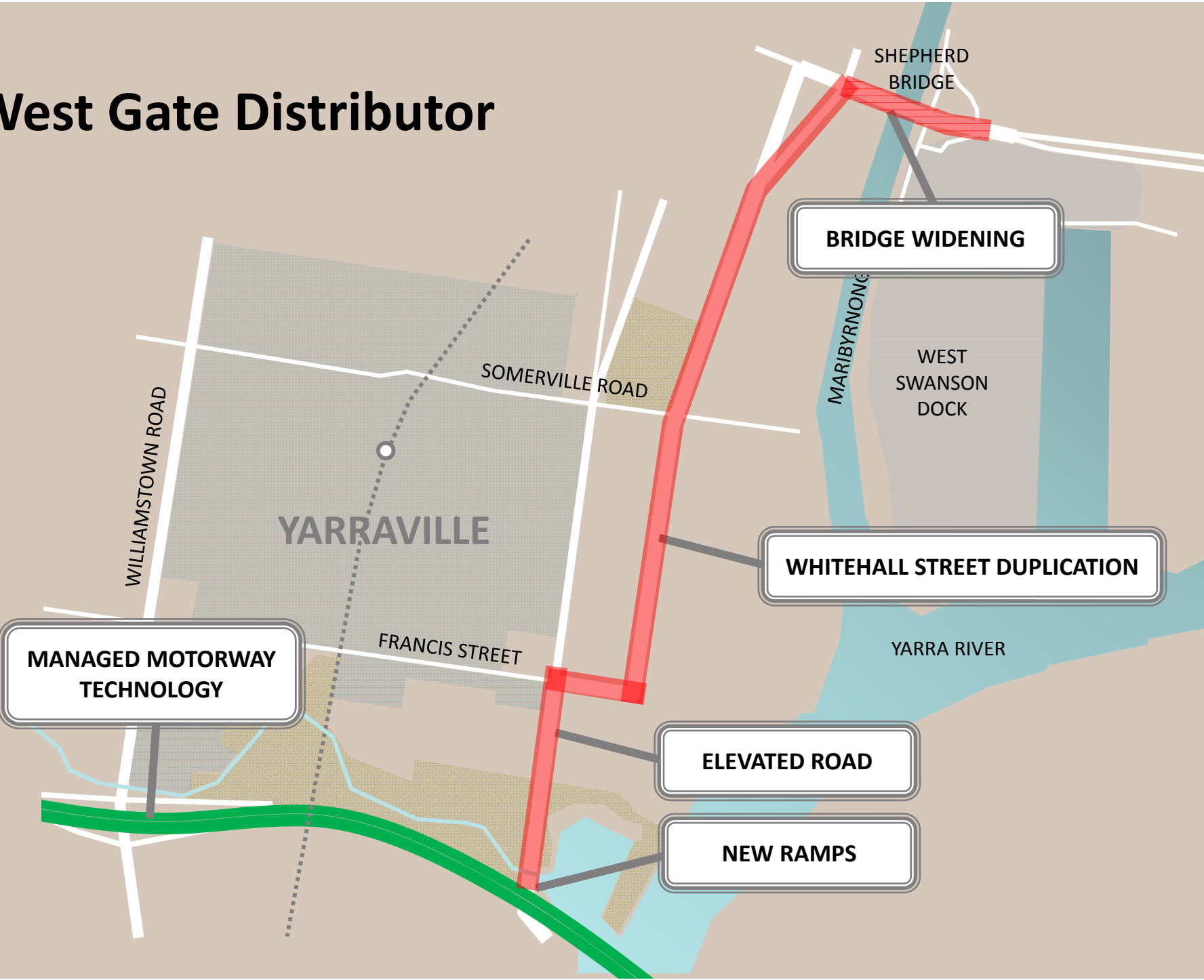
Congestion in the inner west

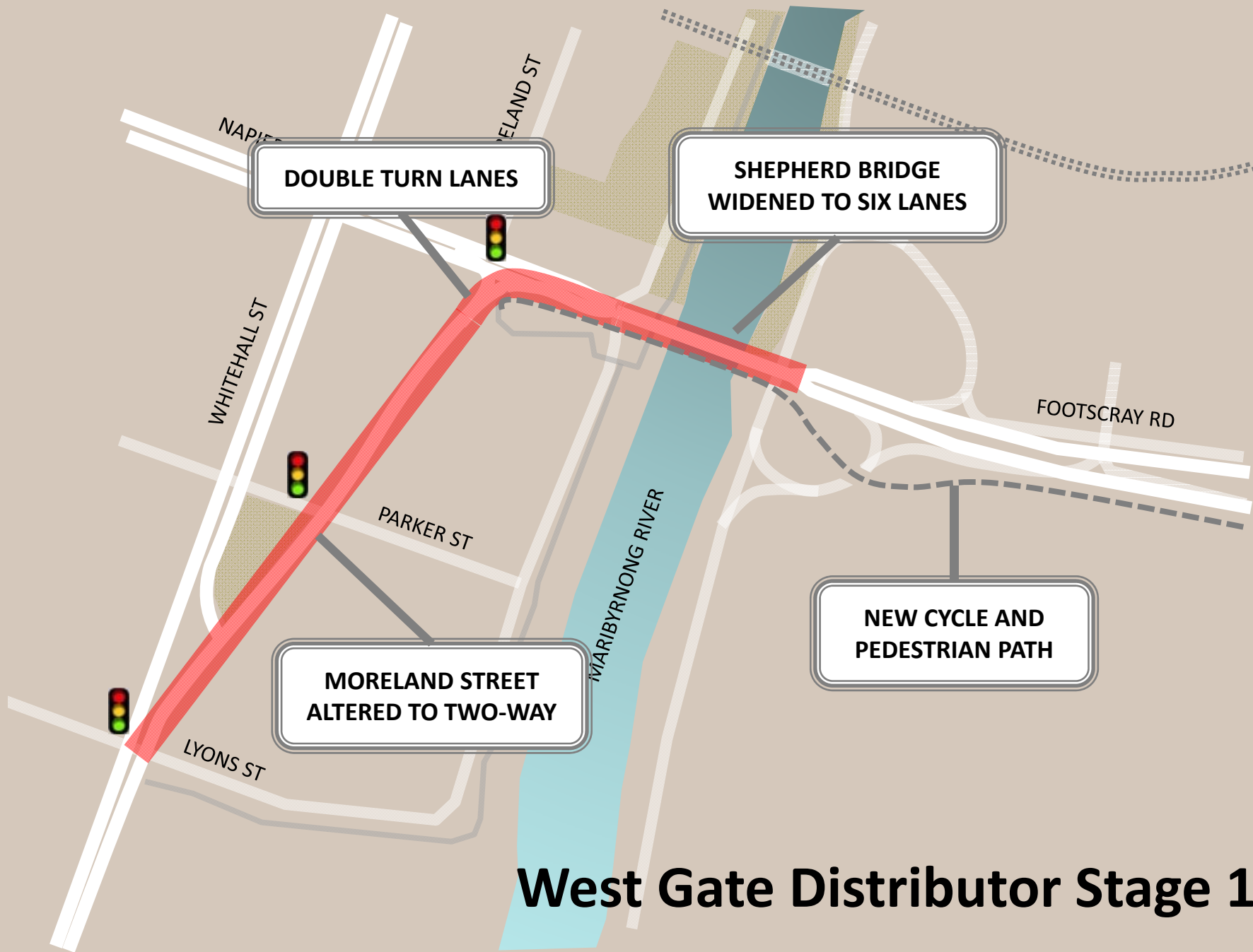


Francis Street, Yarraville



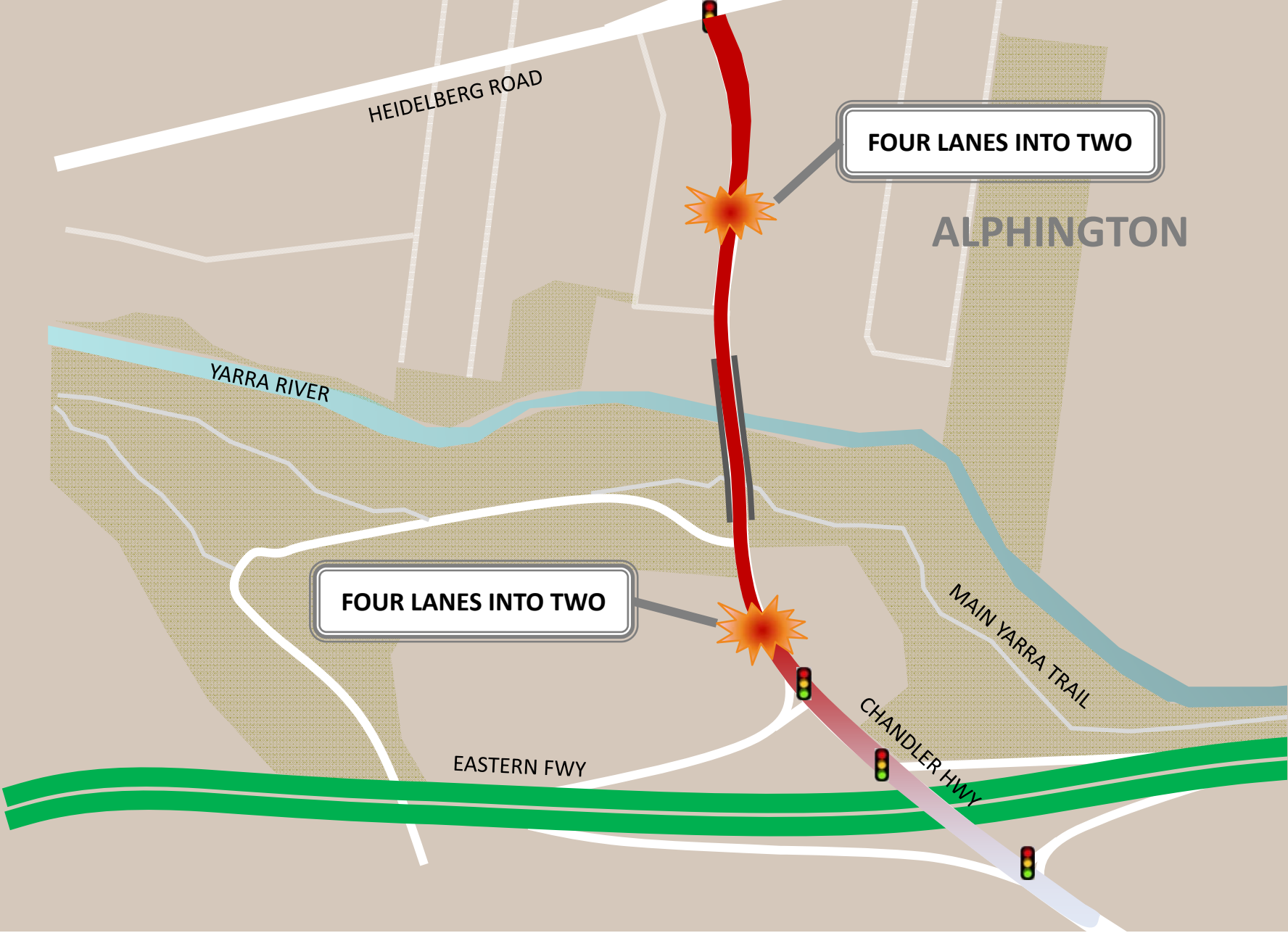
West Gate Distributor





West Gate Distributor Stage 1

Removing the Chandler Highway bottleneck



Tullamarine Freeway widening

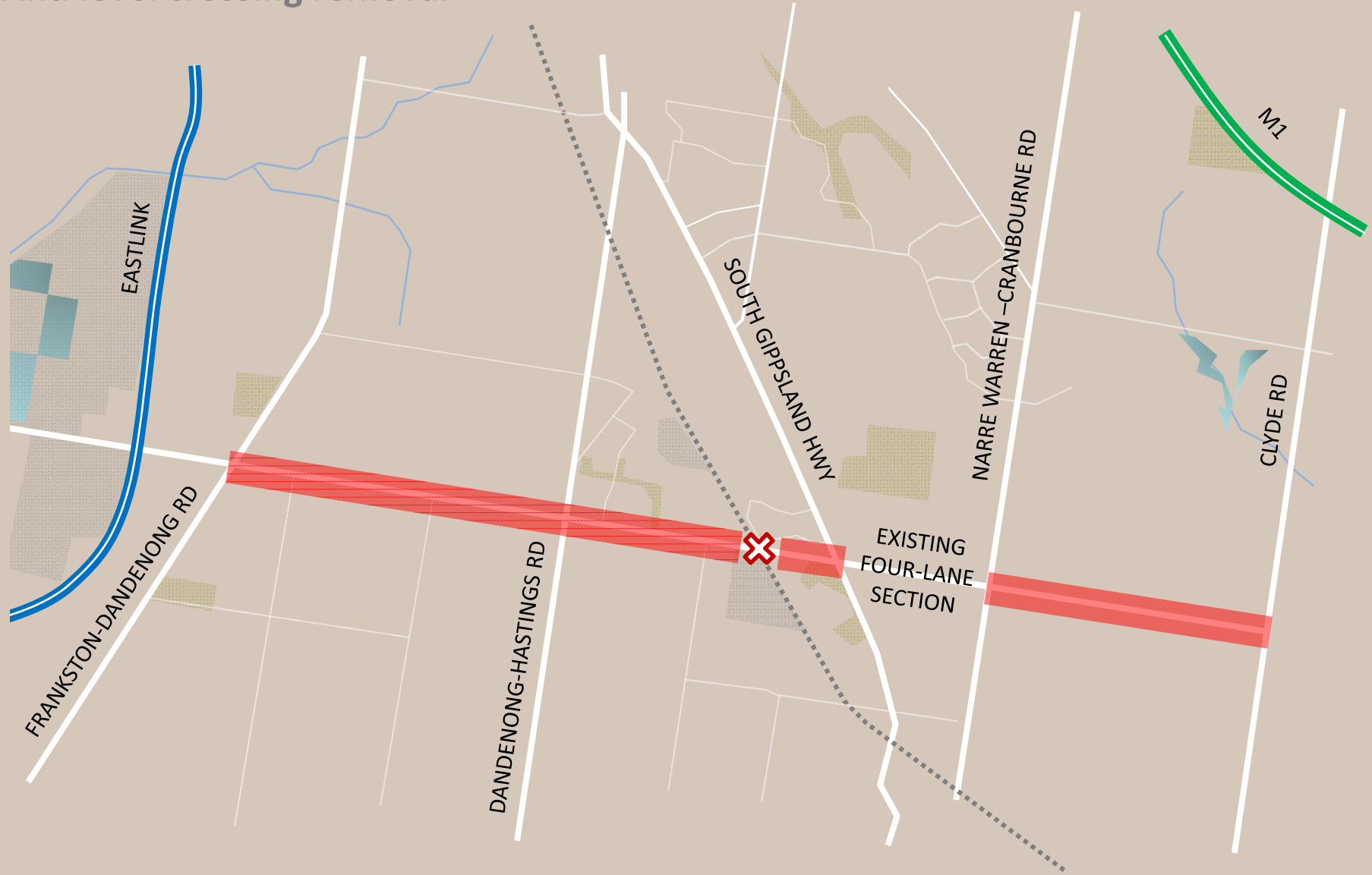


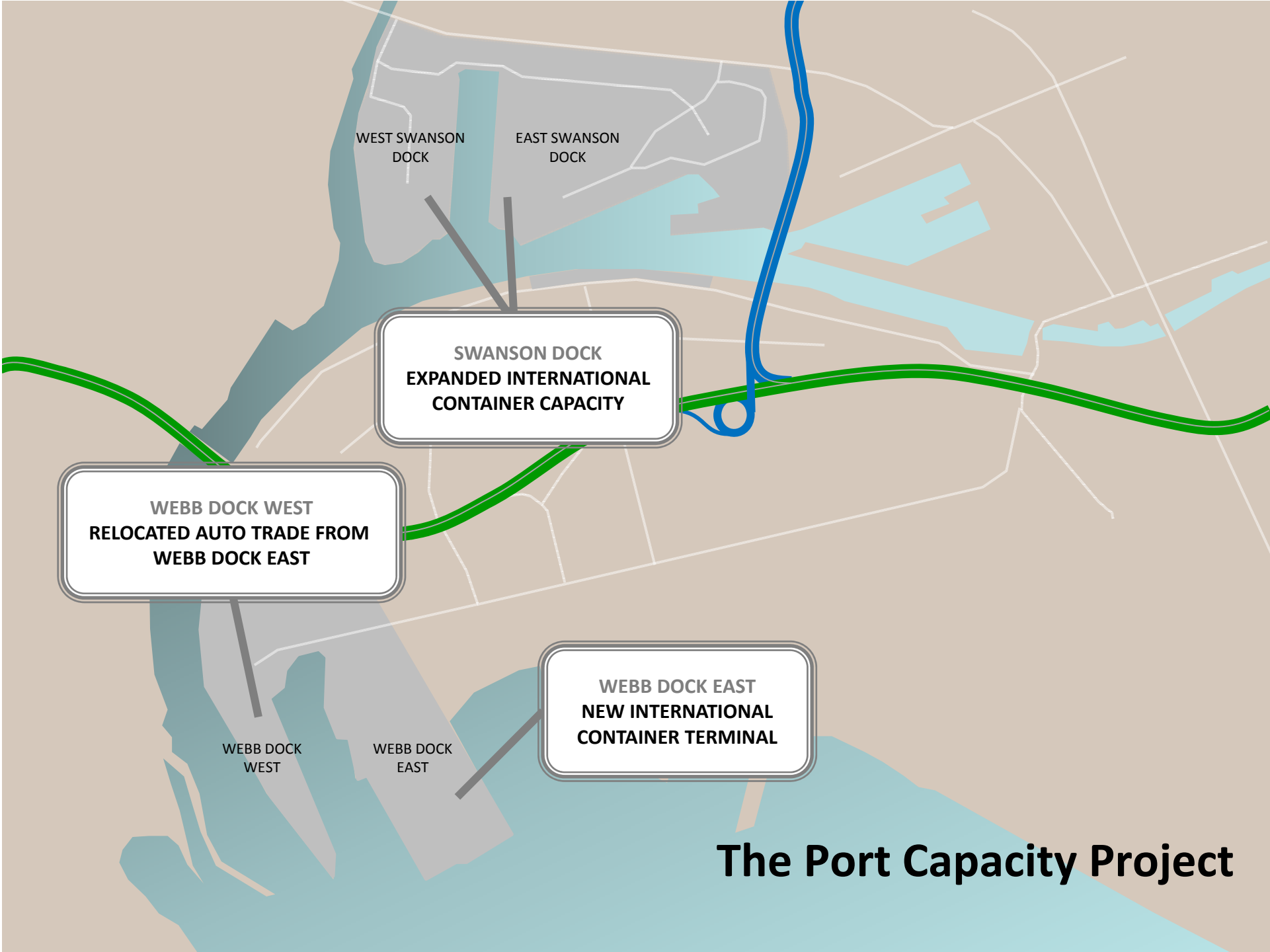
Major inner-city projects



Thompsons Rd duplication

And level crossing removal





The Port Capacity Project

Institute of Transportation Engineers
Annual Breakfast Meeting

Questions

The Hon Luke Donnellan MP
Minister for Roads and Road Safety
Minister for Ports

